

Research to Policy (R2P) in PRCI:

Overview of Upcoming Workshops

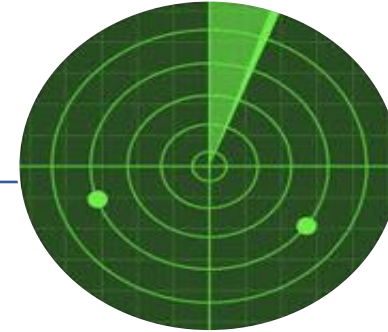
Danielle Resnick, IFPRI

20 November 2020

Presentation at ReNAPRI Side Event

Multiple Objectives of our Research

Elevate issue on
policymakers' radar



Inform costs-benefits of
policy intervention



Push for
improved
implementation



Intervening Variables in the R2P Process

Easier to
address



Harder to
address

Reasons why research may not have intended influence	Potential strategies
Ineffectively disseminated in a digestible format	Improved communication skills
Fails to specify practical actions decision makers can take	
Contradicts findings of other researchers	Transparency & peer review
Legitimacy or credibility of the research is in doubt	
Requires high outlays of resources or regulatory reforms	Complementary technical analysis
Divorced from realities of state capabilities	
Offers no benefit to powerful elites	Issue linkage with elite priorities
Threatens the interests of powerful elites	Identify powerful policy champions
Contradicts ideological position of ruling regime	Strategic framing of finding

R2P Virtual Workshops

Dedicated workshop focused on identifying....

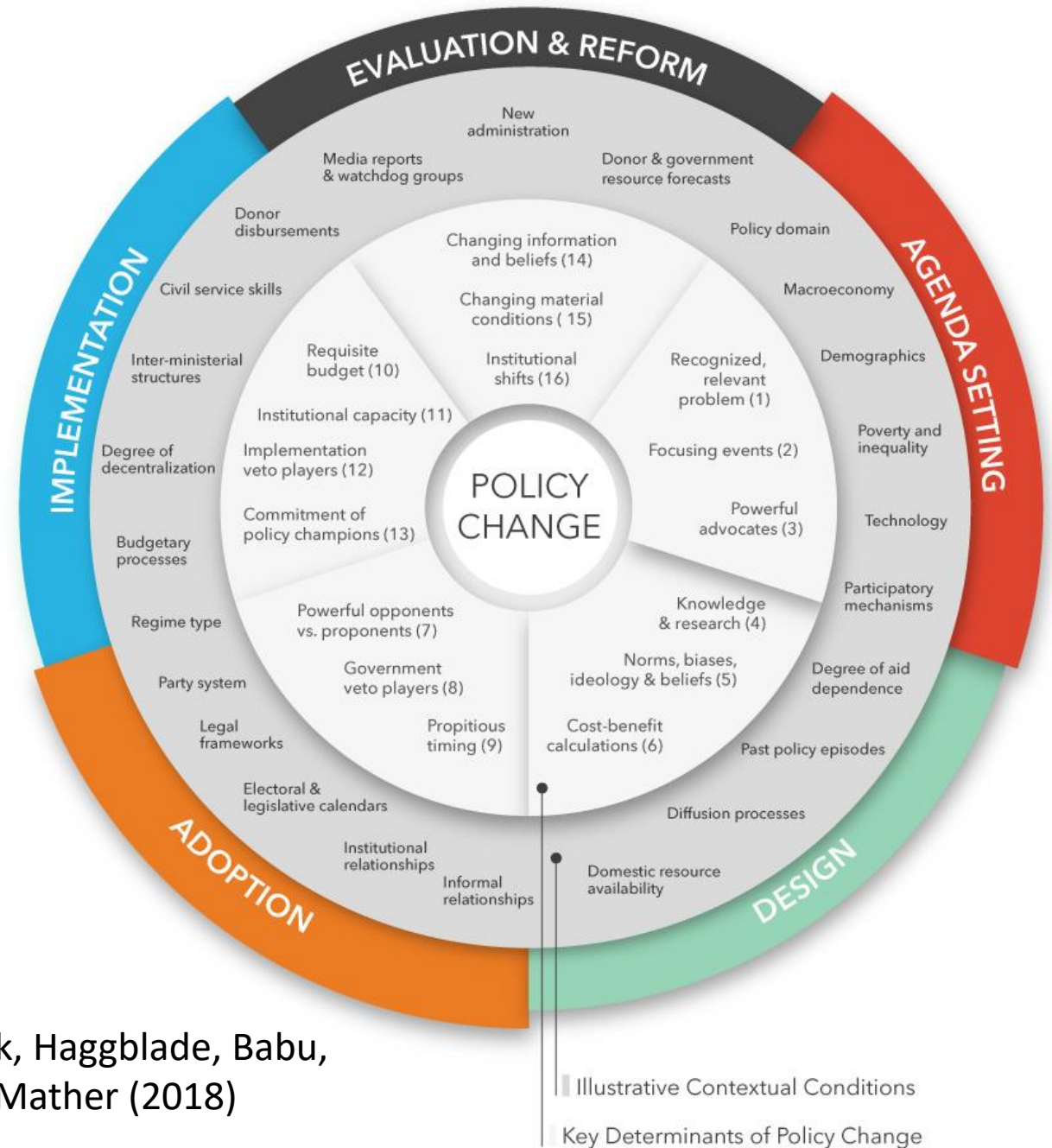
- What is the policy lever to be influenced and the stage of the policy process
- Who should be targeted
- When should they be engaged
- How should they be mobilized

Involve targeted, real-time mapping of key stakeholders relevant to your project and issue area

Development of outreach strategy with mentors that is revisited at regular intervals

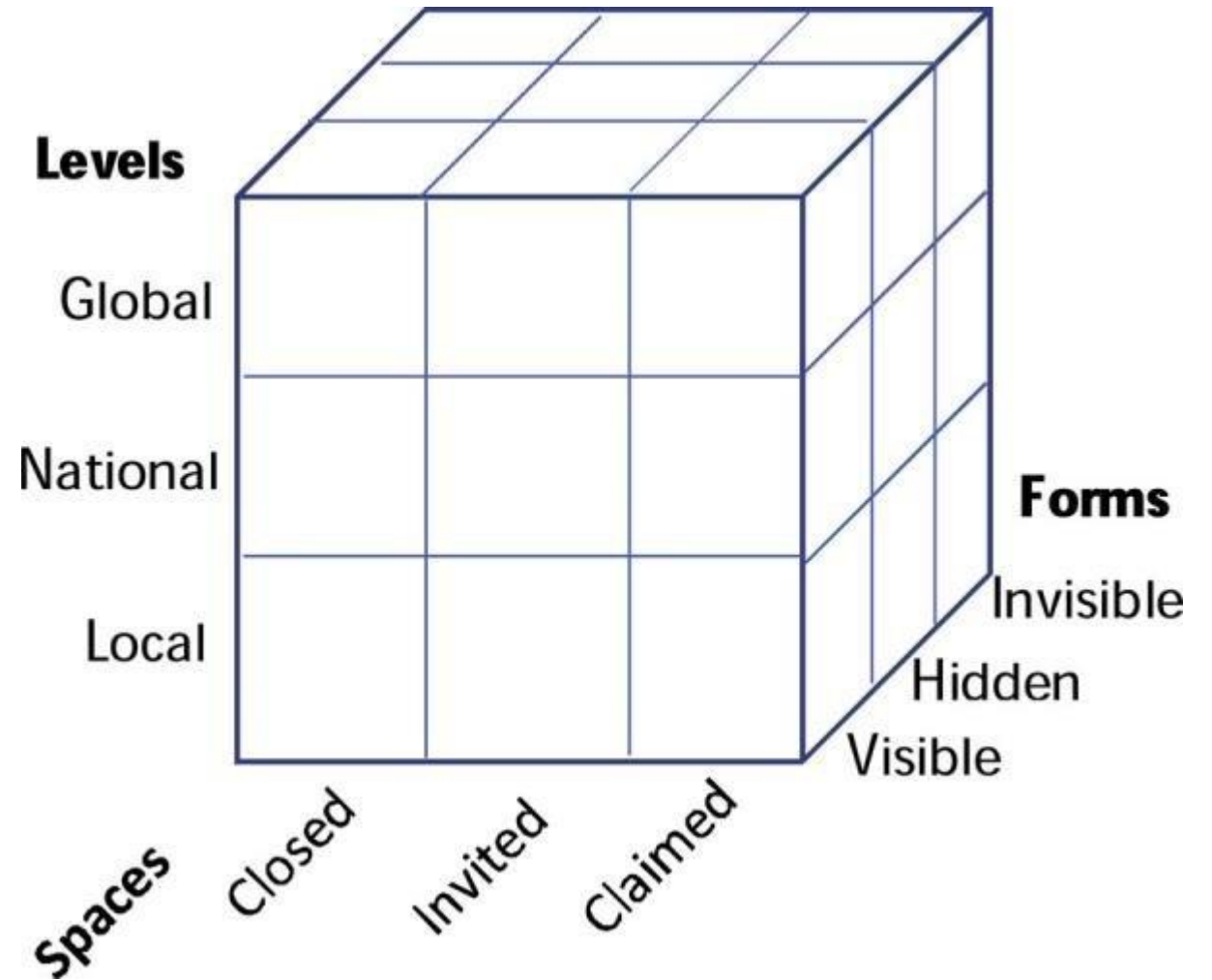
- Focus on audience, timing, and framing

What element of the policy process?



Source: Resnick, Haggblade, Babu, Hendriks, and Mather (2018)

Who has power in this policy domain?



Source: Gaventa (2006)

Landscape for Informal Food Traders (Accra, Ghana)

